

Pressure controlled shut-off valves type DSV and CDSV

These pressure-controlled shut-off valves in the seated valve version block the flow to consumers located downstream without any leakage as soon as the set pressure value is reached or exceeded in the consumer line B. The valves will open again if the pressure on the inlet side A drops below the set value defined by the spring tension. While type DSV is designed for manifold mounting or pipe connection, type CDSV is a screw-in valve with easily machined mounting holes. It is frequently used to safeguard pressure gauges, for example.

Features and benefits:

- Various adjustment options
- Various additional functions

Intended applications:

- General hydraulic systems
- Test benches
- (Pressure gauge) protection valve



Nomenclature:	Shut-off valve
Design:	Individual valve for pipe connection Manifold mounting Screw-in valve
Adjustment:	Tool adjustable manually adjustable
p_{max}:	600 bar
Q_{max}:	60 lpm

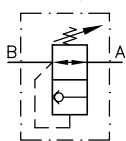
Design and order coding example

CDSV 1	A	- 1/4	- 400
			Pressure setting [bar]
		Design	with connection block (-1/4) Cartridge valve (-)
		Pressure range	Tool adjustable (-) or manually adjustable (R)
Basic type, size	Type CDSV (cartridge valve), size 1		

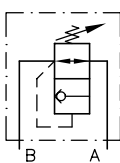
DSV 21-1	B	- 200
		Pressure setting [bar]
		Pressure range Tool adjustable (-) or manually adjustable (R)
Basic type, size	Type DSV (pipe connection), type DSV (manifold mounting), size 1, 2, 3	

Function

CDSV 1, DSV 2



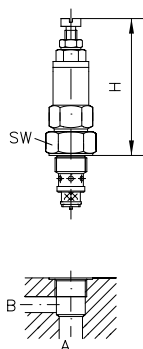
DSVP 2



General parameters and dimensions

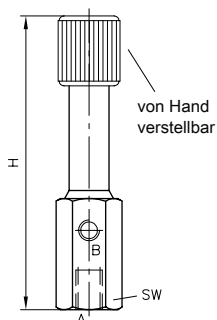
CDSV 1

Screw-in valve



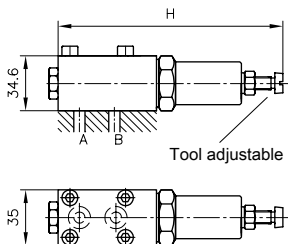
DSV 2-2

Version for pipe connection



DSVP 21-1

Manifold mounting valve



	Design	Size	Q_{\max} [lpm]	p_{\max} [bar]	Ports (BSPP)	H_{\max} [mm]	SW = a/f	m [kg]
CDSV 1	Screw-in valve	1	10	C: 120 B: 350 A: 600	M 16 x 1.5	69	SW 22	0.13
DSV 2 ¹⁾	Version for pipe connection	1	20	D: 40 C: 100 B: 220 A: 600	G 1/4	185	SW 36	0.7
		2	40	D: 20 C: 60 B: 120 A: 400	G 3/8	193	SW 36	0.9
		3	60	D: 20 C: 60 B: 120 A: 400	G 1/2	193	SW 46	1.1
DSVP 2 ¹⁾	Manifold mounting valve	1	20	D: 40 C: 100 B: 220 A: 600	G 1/4	181	-	1.1

1) Manifold mounting valve only in size 1

Associated technical data sheets:

- Shut-off valves type DSV, DSVP: [D 3990](#)
- Shut-off valves type CDSV: [D 7876](#)